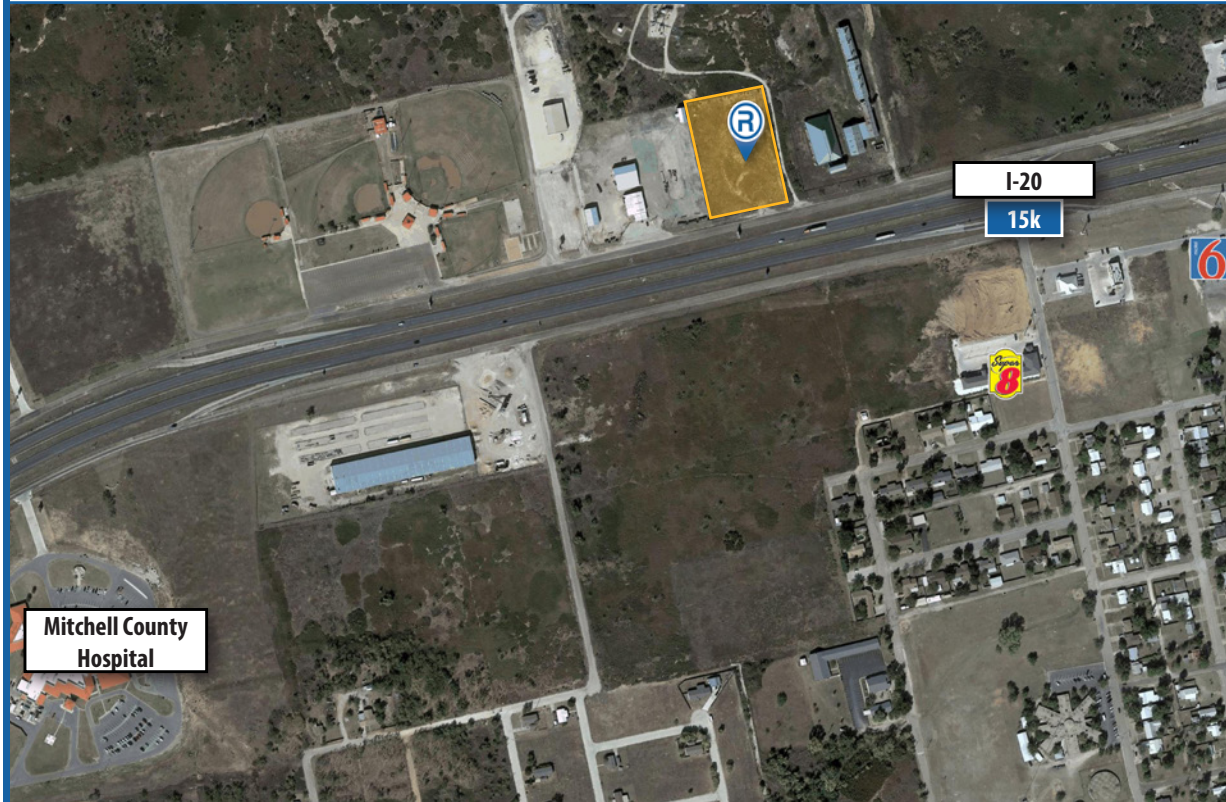




# PIGSKIN PARTNERSHIP SITE | 2.68 ACRES

Colorado City, Texas 79512



## AVAILABLE SITE

2.68 Acres

## TRAFFIC COUNTS

I-20 - 15,567 AADT

Source: SitesUSA 2019

## PROPERTY INFORMATION

- Development Opportunity
- Close proximity to Mitchell County Hospital
- Favorable traffic counts
- Visibility from highly traveled I-20
- Serves a consumer market of almost 9,000

## DEMOGRAPHICS (based on 2019 data)

Variable	Community Population	Prim RTA
2019 Population	3,903	8,867
Average HH Income	\$68,813	\$75,037
Median Age	36.78	36.03

\* RTA – Retail Trade Area; the geographic area from which retailers derive approximately 80-85% of their business.

## CONTACT

Aaron Farmer, Senior Vice President  
 The Retail Coach, LLC  
 afarmer@theretailcoach.net  
 662.231.0608

Rayanna McGaha, Economic Development Director  
 Colorado City EDC  
 edo@cityofcoloradocity.org  
 325.728.2072

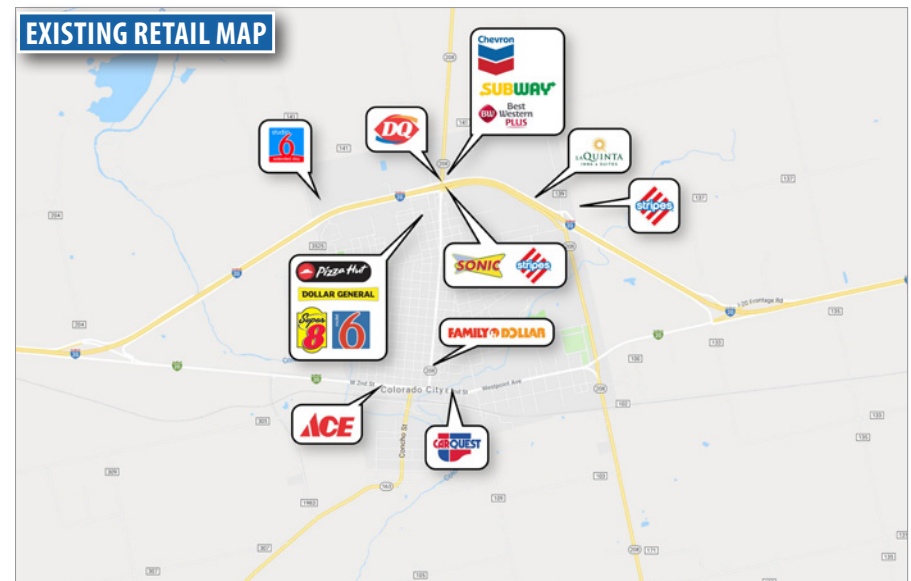
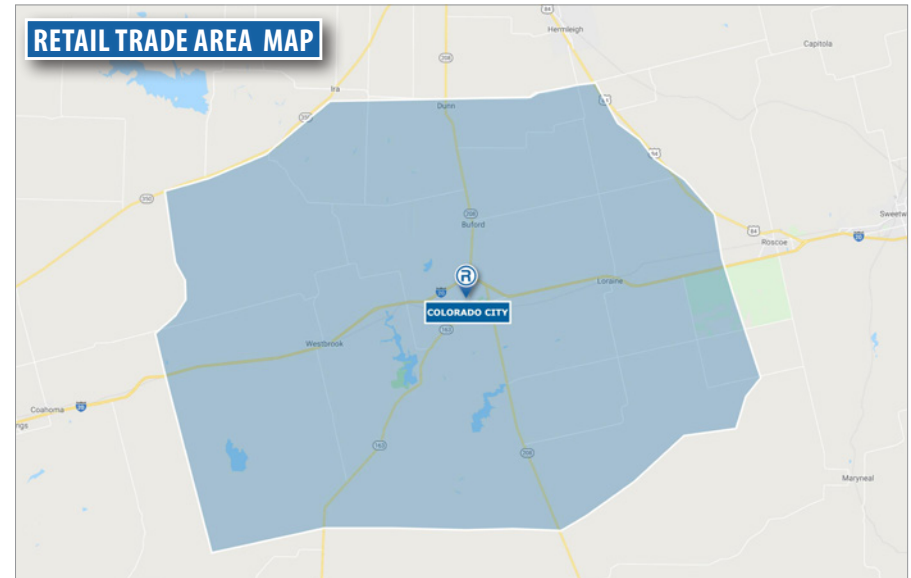
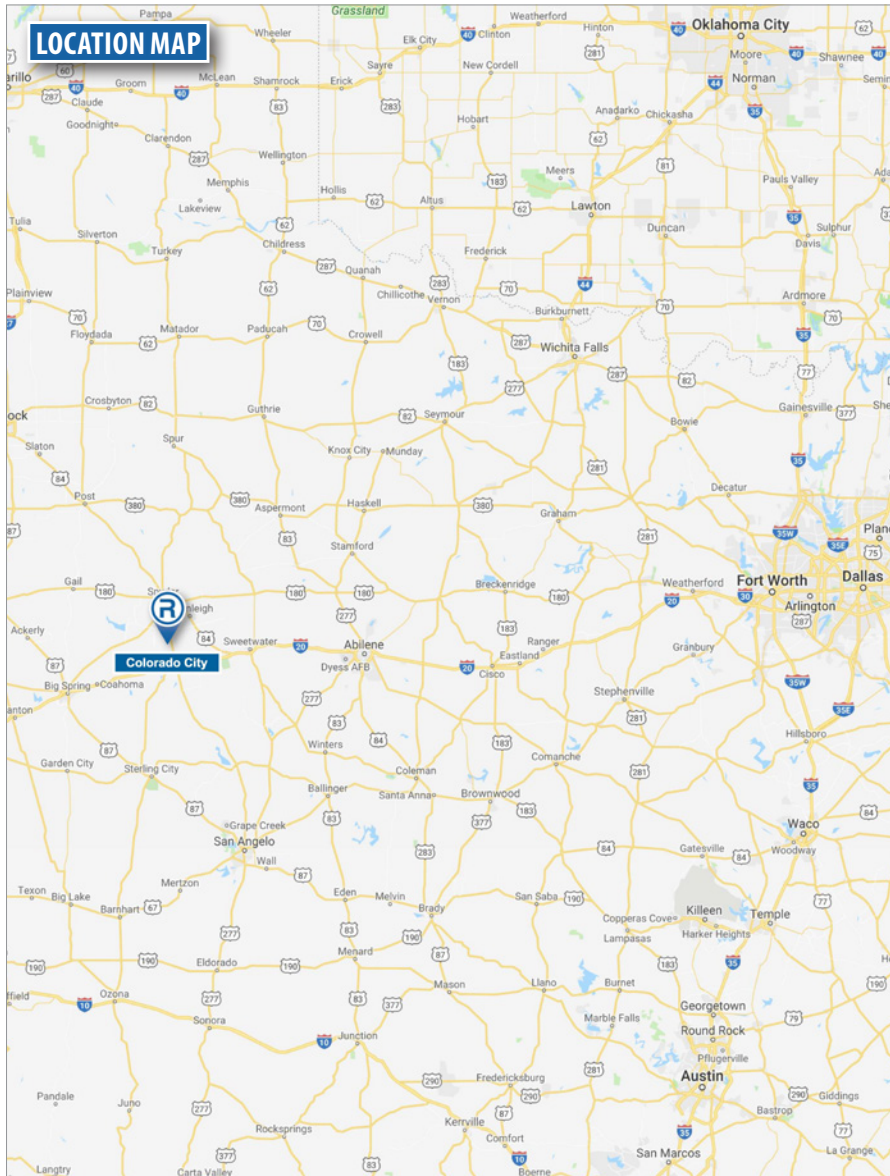
 **TheRetailCoach**® P.O. Box 7272 | Tupelo, MS 38802 | 800.851.0962 | [www.theretailcoach.net](http://www.theretailcoach.net)


The information contained herein was obtained from sources believed to be reliable; however, The Retail Coach makes no guarantees, warranties, or representations as to the completeness or accuracy thereof. The presentation of this property is submitted subject to errors, omissions, change of price or conditions, prior sale or lease, or withdrawal without notice.



# PIKSKIN PARTNERSHIP SITE | 2.68 ACRES

Colorado City, Texas 79512



 **TheRetailCoach**® P.O. Box 7272 | Tupelo, MS 38802 | 800.851.0962 | [www.theretailcoach.net](http://www.theretailcoach.net)

The information contained herein was obtained from sources believed to be reliable; however, The Retail Coach, makes no guarantees, warranties, or representations as to the completeness or accuracy thereof. The presentation of this property is submitted subject to errors, omissions, change of price or conditions, prior sale or lease, or withdrawal without notice.