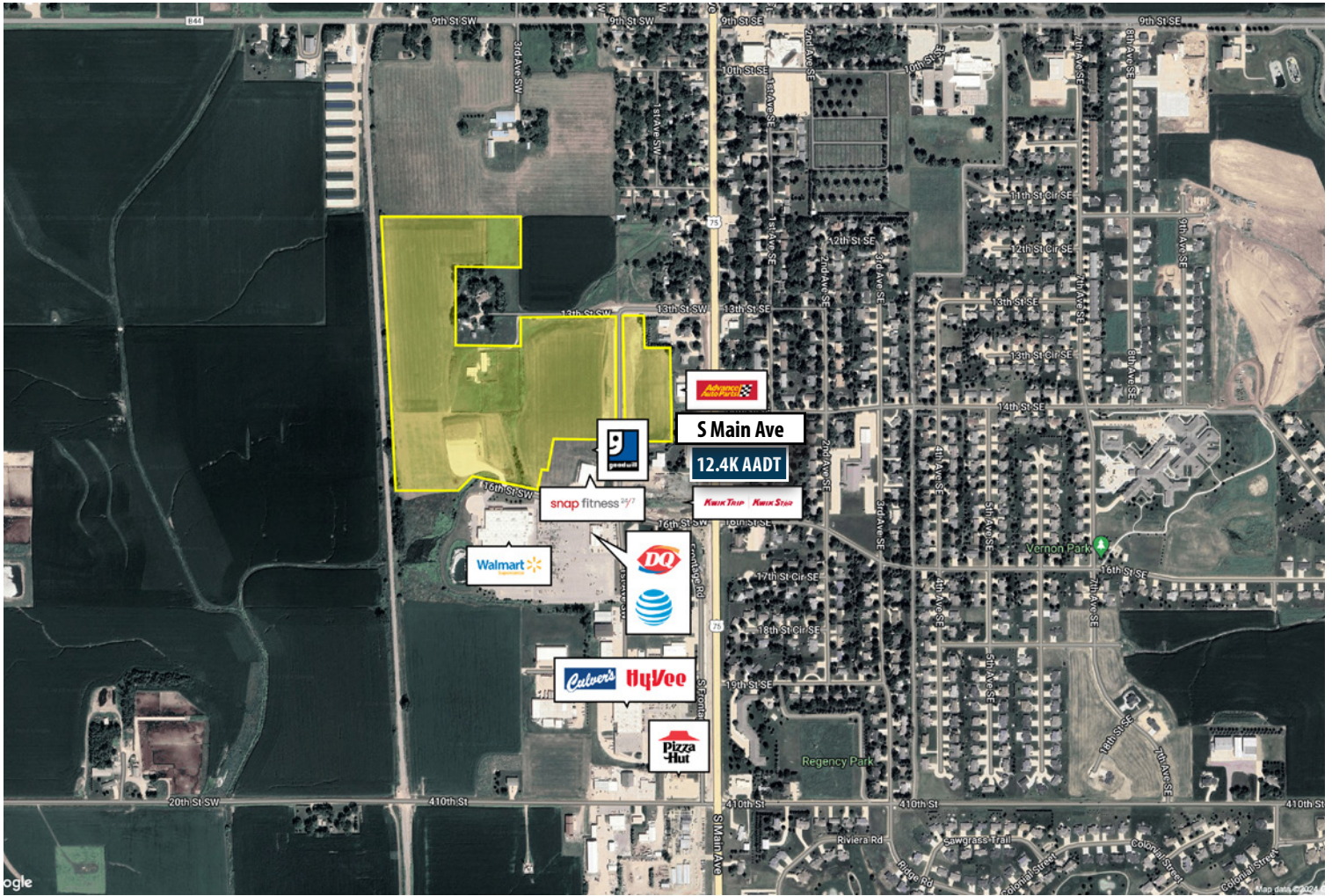


± 51.2 Acre City Owned Development Opportunity

Sioux Center, Iowa 51250



PROPERTY INFORMATION

- ± 51.2 acres available
- Property owned by the city
- Great traffic counts along highly traveled S Main Ave
- Great junior box development opportunity in the heart of Sioux Center's primary retail corridor
- Located near Dordt University (1,600 students), Sioux Center Community Schools, ASB Sports Complex (250,000 visitors), All-Seasons Center and Siouxnami Waterpark (70,000 visitors), and numerous other attractions.
- Close proximity to national retailers and restaurants

CONTACT INFORMATION

Lucas Heiberger

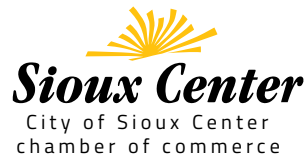
City of Sioux Center
Community Development Director
Office 712.722.0761
LucasH@SiouxCenter.org
www.SiouxCenter.gov

Kyle Cofer

The Retail Coach, LLC
Project Director
Office 662.844.2155
Cell 662.319.7144
KyleCofer@TheRetailCoach.net
www.TheRetailCoach.net

Barbara Den Herder, IOM

Sioux Center Chamber of Commerce
Chief Executive Officer
Phone 712.722.3457
BarbDH@SiouxCenterChamber.com
www.SiouxCenterChamber.com

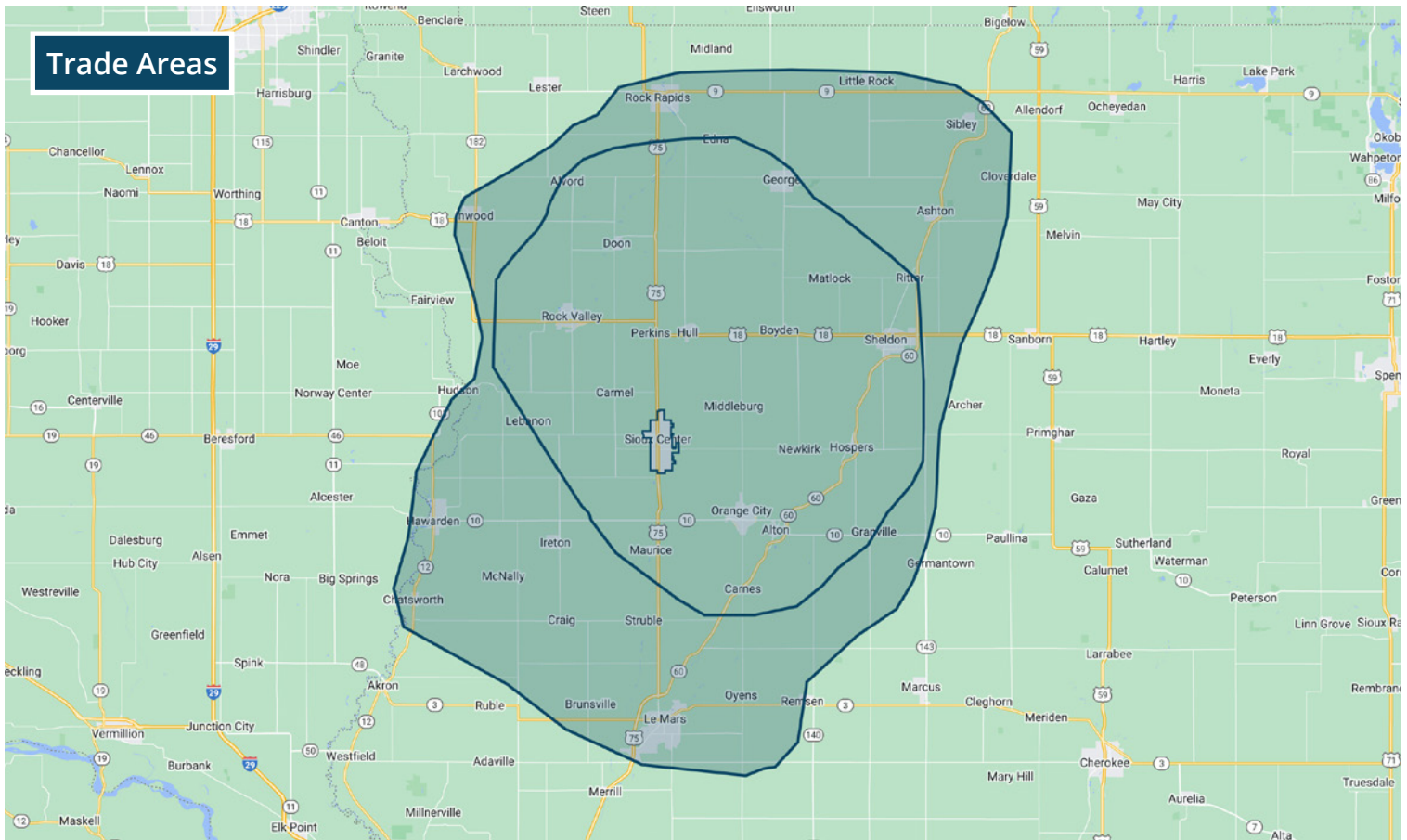


QUICK FACTS

Population	Community	Primary RTA	Secondary RTA
2024	8,435	40,318	68,636
2029	8,716	41,393	70,081
Income	Community	Primary RTA	Secondary RTA
Average HH	\$110,429	\$103,522	\$101,561
Median HH	\$93,281	\$86,089	\$84,303
Per Capita	\$37,547	\$38,476	\$39,010
Age	Community	Primary RTA	Secondary RTA
Median Age	26.66	33.82	36.18
Average Age	34.20	37.42	38.57

± 51.2 Acre City Owned Development Opportunity

Sioux Center, Iowa 51250



Area Retail

