



COUNTY LINE PLAZA

1053 E County Line Rd, Jackson, MS 39211





COUNTY LINE PLAZA

1053 E County Line Rd, Jackson, MS 39211



SPACE AVAILABLE

- Suite 1259 - 5,247 SF
- Suite 1063 - 8,200 SF
- Suite 1047 - 10,000SF
- Suite 1057 - 10,330 SF
- Suite 102 - 2,200 SF

TRAFFIC COUNTS

- County Line Road - 37,000 VPD
- Ridgewood Court Drive - 3,300 VPD
- Ridgewood Road 11,000 VPD

PROPERTY INFORMATION

- One of Mississippi's most successful retail corridors
- County Line Plaza offers high visibility and easy access
- Current tenants include Burlington, Conn's, Big Lot's, Shoe State, Burke's Outlet, Tuesday Morning, Mens Warehouse, and many more

DEMOGRAPHICS (based on 2021 data)

Variable	Community Population	US RTA
2021 Population	157,177	300,391
Average HH Income	\$57,951	\$79,838
Median Age	34.11	35.83

CONTACT

Aaron Farmer, President
 The Retail Coach, LLC
 afarmer@theretailcoach.net
 662.231.0608

Michael A. Davis, SBDC Center Manager
 City of Jackson
 mdavis@jacksonms.gov
 601.960.1993

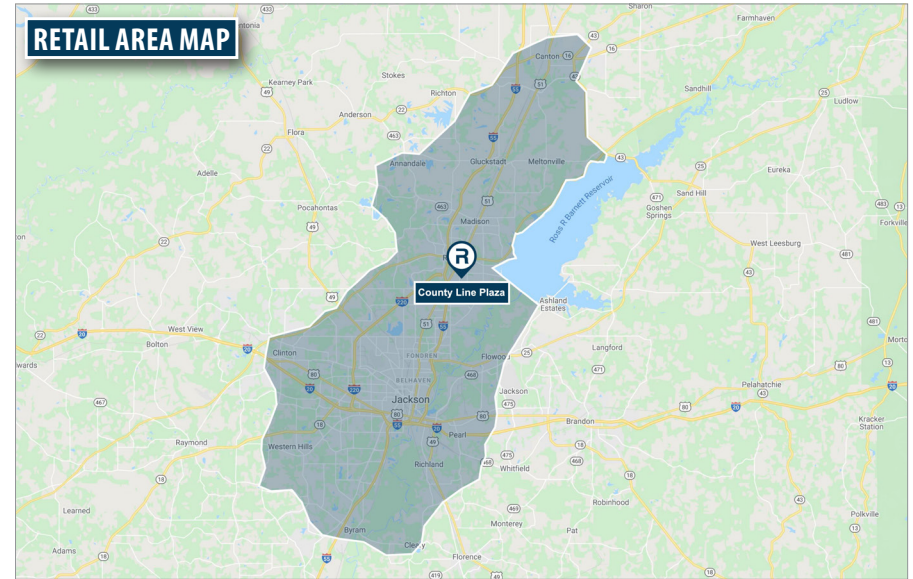
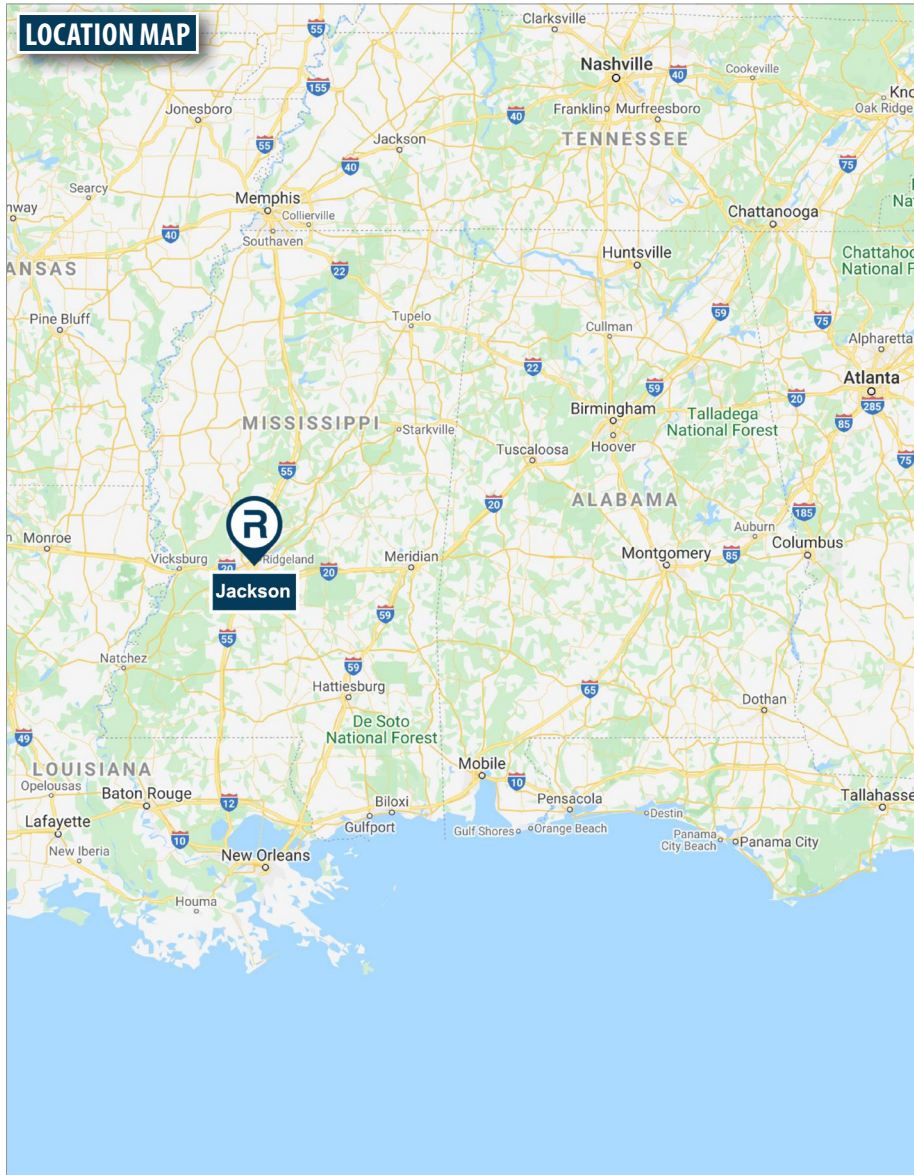
 **TheRetailCoach**® P.O. Box 7272 | Tupelo, MS 38802 | 800.851.0962 | www.theretailcoach.net

The information contained herein was obtained from sources believed to be reliable; however, The Retail Coach makes no guarantees, warranties, or representations as to the completeness or accuracy thereof. The presentation of this property is submitted subject to errors, omissions, change of price or conditions, prior sale or lease, or withdrawal without notice.



COUNTY LINE PLAZA

1053 E County Line Rd, Jackson, MS 39211



TheRetailCoach® P.O. Box 7272 | Tupelo, MS 38802 | 800.851.0962 | www.theretailcoach.net

The information contained herein was obtained from sources believed to be reliable; however, The Retail Coach, makes no guarantees, warranties, or representations as to the completeness or accuracy thereof. The presentation of this property is submitted subject to errors, omissions, change of price or conditions, prior sale or lease, or withdrawal without notice.